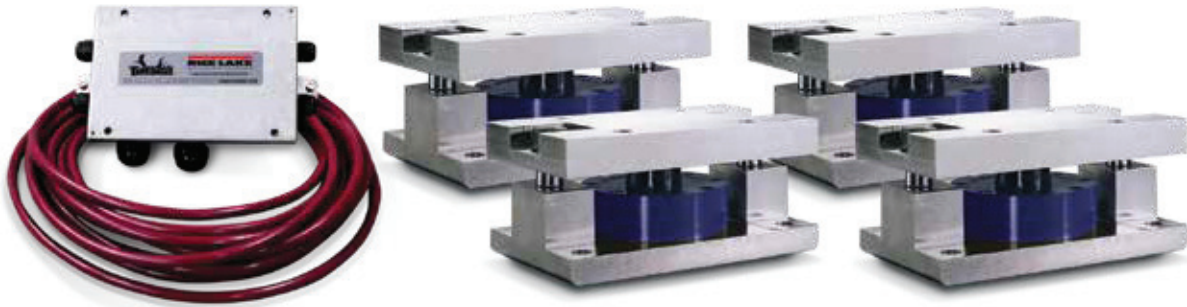


WEIGH MODULES

RL2200 Series

Tank, Hopper and Vessel Weighing Assembly

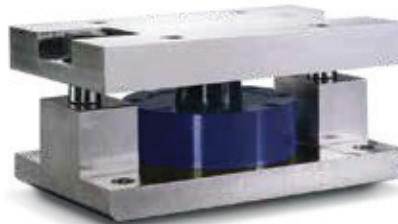


Available in configurations with three or four mounting assemblies.
Picture is a representation of actual product

The RL2200 Series mounts are ideal for use in tank, hopper, vessel and many other applications. The low-profile design allows for economical solutions in a competitive marketplace. This rugged, high-precision mount is designed for easy installation and does not require check rods or other stabilizing hardware. The RL2200 mount has the added feature of self centering, allowing for side loads without sacrificing performance.

Specifications

- Full Scale Output:**
4.0 mV/V, 2.0 mV/V (2500 lb)
- Bridge Resistance:**
350 ohms nominal
- Material/Finish:**
High-alloy steel, painted
- Safe Overload:**
150% Full Scale
- Rated Excitation:**
5-10 VDC (20 V maximum)
- Nonlinearity:**
0.05% Full Scale
- Hysteresis:**
0.03% Full Scale
- Temperature:**
Compensated range:
15°F to 115°F/-9°C to 46°C
- Insulation Resistance:**
5,000 megohms
- Seal Type:**
Environmentally sealed
- *Cable Length:**
30 ft/9.1 m
- Cable Color Code:**
Red.....+ Excitation
Black.....- Excitation
White+ Signal
Green- Signal
- Warranty:**
Two-year limited warranty
- *Compression load application*



Assembly with integral RL2200 compression disk load cell.

Complete Kit Includes

- One JB4SS NEMA Type 4X stainless steel signal trim junction box
- Three or four RL2200 high-alloy, zinc-plated steel mounting assemblies
- Three or four RL2200 compression disk load cells
- 25 ft of our hostile environment EL147HE SURVIVOR® load cell cable

Standard Features

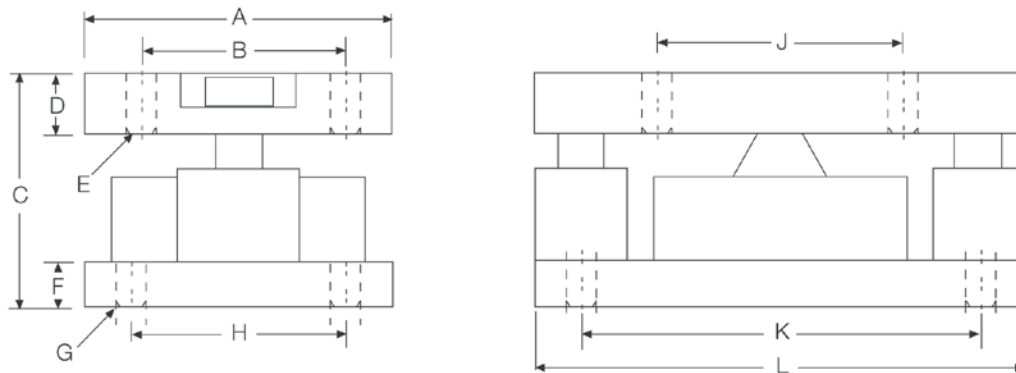
- Capacities: 2500-50,000 lb (1134-22,680 kg)
- Low-profile design
- High 4 mV/V output (2 mV/V, 2500 lb)
- Self-centering in all directions—able to withstand excessive side loads
- Self-checking assembly

Applications

- Tank, hopper or vessel weighing
- Belt or roller conveyors
- Scale platforms and screw feeders

RL2200 Series

Tank, Hopper and Vessel Weighing Assembly

**Dimensions**

Rated Capacity	A	B	C	D	E	F	G	H	J	K	L
lb/in											
2,500-10,000	5.00	3.50	4.00	1.00	0.52	1.0	0.52	3.50	4.00	6.50	8.00
25,000-50,000	6.00	4.50	5.00	1.25	0.78	1.0	0.78	4.50	5.00	7.75	10.0
kg/mm											
1,134.0-4,536.0	127.0	88.9	101.6	25.4	13.2	19.0	13.2	88.9	101.6	165.1	203.2
11,340.0-22,679.6	152.4	114.3	127.0	31.7	19.8	25.4	19.8	114.3	127.0	196.8	254.0

Order Information

Load Rating (Per Module)	Part#	Price
Single Module		
2,500 lb	1,134 kg	76656
5,000 lb	2,268 kg	45849
10,000 lb	4,536 kg	45848
25,000 lb	11,340 kg	45847
50,000 lb	22,680 kg	45846
3-Module Kit		
2,500 lb	1,134 kg	76897
5,000 lb	2,268 kg	42811
10,000 lb	4,536 kg	42812
25,000 lb	11,340 kg	42813
50,000 lb	22,680 kg	42814
4-Module Kit		
2,500 lb	1,134 kg	76898
5,000 lb	2,268 kg	42815
10,000 lb	4,536 kg	42816
25,000 lb	11,340 kg	42817
50,000 lb	22,680 kg	42818

Replacement Load Cell Order Information

Load Rating (Per Module)	Part#	Price
2,500 lb	1,134 kg	76654
5,000 lb	2,268 kg	45708
10,000 lb	4,536 kg	45709
25,000 lb	11,340 kg	45710
50,000 lb	22,680 kg	45711