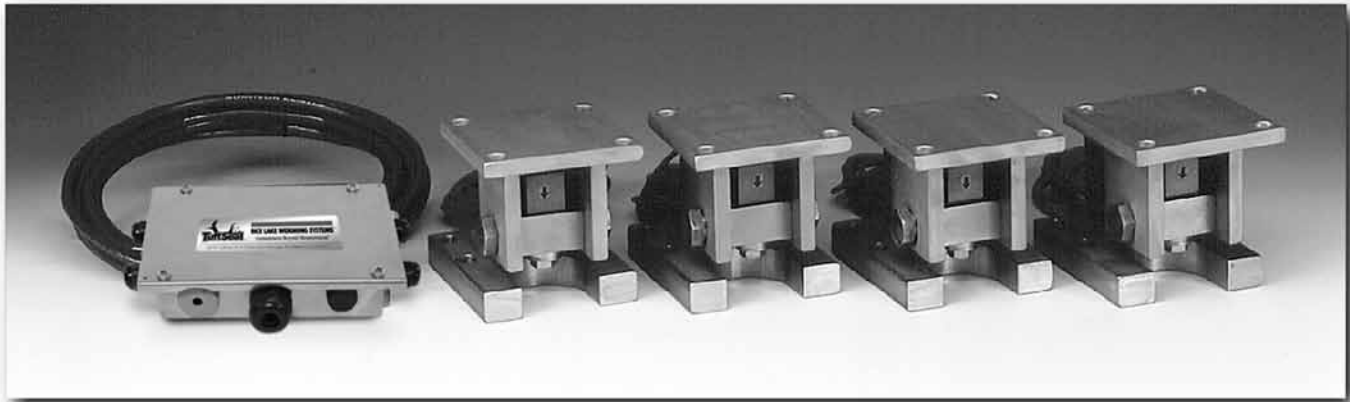


RL 1855HE Medium-Capacity Weigh Modules



Picture is a representation of actual product

The internal height adjustment feature of the 1855HE reduces the need for shims or external hardware, simplifying installation. The standard conduit adapter allows for connection to conduit for cable protection. With standard NTEP Certified, 1:5000 division class III load cells, the 1855HE provides an accurate weighing system when properly installed. Highly versatile, the 1855HE offers worry-free operation in a wide variety of rugged applications.

STANDARD FEATURES

- All stainless steel construction
- Welded seal, stainless steel load cells, IP67, guaranteed waterproof
- NTEP Certified load cells, 5000d, Class III Multiple Cell
- Bolt-in-place design; module bolts directly to tank leg without requiring additional load buttons or mounting plates
- Self-checking design with lift-off/tip-over protection
- Two-year limited warranty

APPLICATIONS

- Medium-capacity hoppers, bins and tanks
- Chemical batching/blending
- Fertilizer blending

OPTIONAL FEATURES

- RL35082 IP66/68 load cells available

COMPLETE KIT INCLUDES

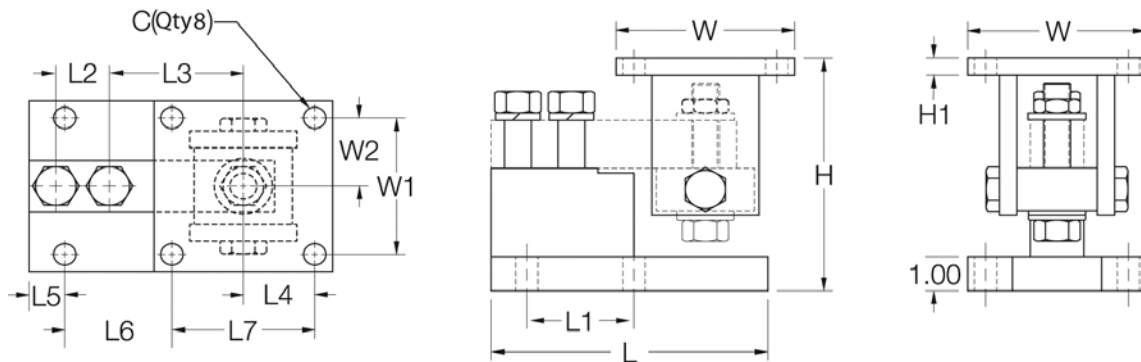
- 1 JB4SS NEMA 4X stainless steel signal-trim junction box
- 3 or 4 1855HE stainless steel compression mounts
- 3 or 4 RL35082 stainless steel, welded seal single-ended beam load cells (see page 128)
- 25' of our Hostile Environment EL147HE SURVIVOR® load cell cable

LOAD CELL CERTIFICATIONS



NOTE: Check with your local Weights & Measure officials for suitability in Legal-For-Trade applications.

RL 1855HE Medium-Capacity Weigh Modules



DIMENSIONS

RATED CAPACITY	C	H MIN/MAX	H1	L	L1	L2	L3	L4	L5	L6	L7	W	W1	W2
lb/inches														
1000-4000	.62	5.25/5.56	.50	6.00	2.00	1.00	3.00	2.00	.68	1.94	4.00	5.00	4.00	2.00
5000-10,000	.62	6.12/6.62	.50	7.75	3.00	1.50	3.75	2.00	1.03	2.97	4.00	5.00	4.00	2.00
kg/mm														
453.6-1814.4	15.8	133.4/141.2	12.7	152.4	50.8	25.4	76.2	50.8	17.3	49.3	101.6	127.0	101.6	50.8
2268.0-4535.9	15.8	155.4/168.1	12.7	196.9	76.2	38.1	95.3	50.8	26.2	75.4	101.6	127.0	101.6	50.8

ORDER INFORMATION

LOAD RATING (PER MODULE)	PART #	PRICE
Single Modules (Includes Load Cell)		
1000 lb (453.6 kg)	32975	Consult
2500 lb (1134.0 kg)	32976	Consult
4000 lb (1814.4 kg)	32977	Consult
5000 lb (2268.0 kg)	32978	Consult
10,000 lb (4535.9 kg)	32979	Consult

ORDER INFORMATION

LOAD RATING (PER MODULE)	PART #	PRICE
3-Module Kit		
1000 lb (453.6 kg)	30390	Consult
2500 lb (1134.0 kg)	30388	Consult
4000 lb (1814.4 kg)	30386	Consult
5000 lb (2268.0 kg)	30384	Consult
10,000 lb (4535.9 kg)	30382	Consult
4-Module Kit		
1000 lb (453.6 kg)	30389	Consult
2500 lb (1134.0 kg)	30387	Consult
4000 lb (1814.4 kg)	30385	Consult
5000 lb (2268.0 kg)	30383	Consult
10,000 lb (4535.9 kg)	30381	Consult