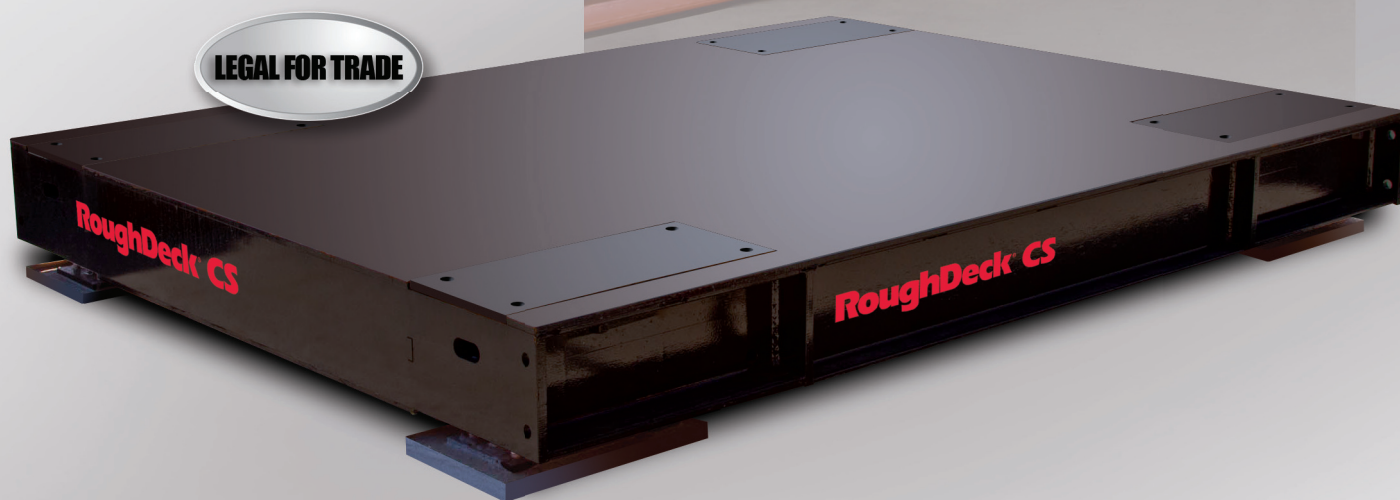


RoughDeck® CS

COIL SCALES

LEGAL FOR TRADE



RICE LAKE®
WEIGHING SYSTEMS

To be the best by every measure®

800-472-6703

www.ricelake.com
m.ricelake.com

ROCK SOLID

LEGAL FOR TRADE

Tailor-made tough

The world's toughest weighing jobs demand a scale like no other. Rice Lake's RoughDeck CS was born for the unique task of weighing dense industrial materials to Legal for Trade accuracy. For steel coils, castings, cable spools or more, see why RoughDeck CS is the first and only scale investment you'll ever make.

- Off the shelf, or made to order
- Custom sizes and capacities
- Rail and track versions custom built to your specifications
- Above ground or pit mounting
- Specialty coil cradles and fixtures



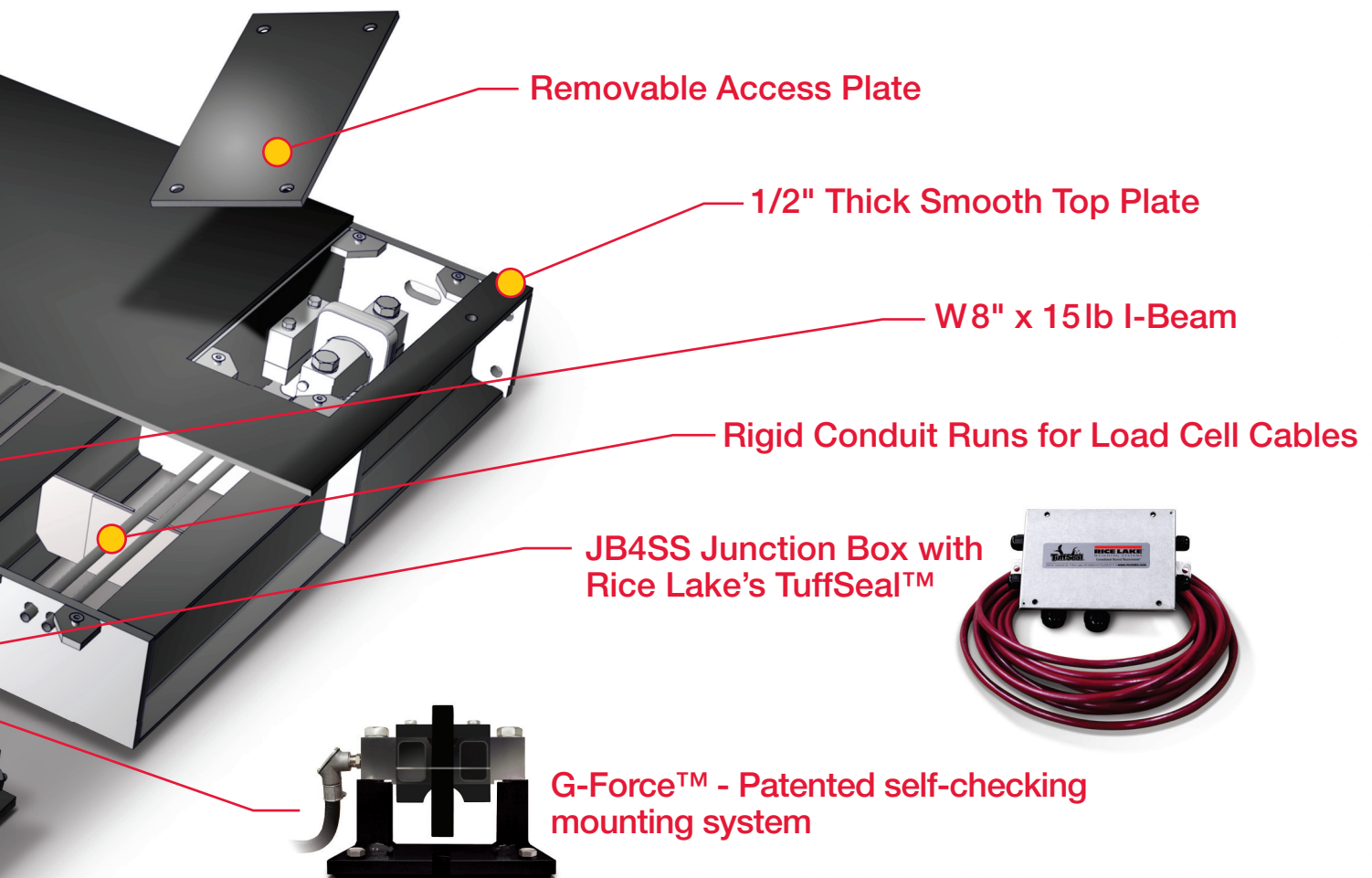
The NTEP Certified RoughDeck® CS Coil Scale

Pack all the strength and substance of a SURVIVOR® truck scale into one tight little package and what do you get? The RoughDeck CS. Tougher than a truck scale, and made by Rice Lake for the challenge of weighing massive steel coils and other dense material, to Legal for Trade accuracy.

Steel handling is the ultimate test for industrial equipment. The RoughDeck CS's tightly spaced steel I-beams, half-inch thick top plate, and the patented G-force self-checking

mounting system make it the most solidly constructed scale on the market. And when it comes to extreme conditions, the RoughDeck CS takes a punch and comes back for more, delivering accurate results, day after day.

Rice Lake's RoughDeck CS is Legal for Trade in capacities up to 100,000 pounds. Choose a standard platform size or let Rice Lake help design a RoughDeck CS to your specifications.



Specialty Options for Steel Handling

Get the most from your RoughDeck CS Coil Scale with options and accessories like indicators and remote displays. Or customize your scale with coil cradles and v-tops to optimize your handling needs. The RoughDeck CS can be built to fit existing pit frames, or used in above ground applications.



Above ground installation



Pit mount installation

Standard Features

- NTEP approved for scales sized 4 ft x 6 ft to 10 ft x 20 ft, capacities 25,000 lb to 100,000 lb
- Low profile, yet heavy duty
- Smooth top plate
- JB4SS Tuffseal® signal trim junction box conveniently tucked away and protected in one of the load cell pockets
- MVS self-checking mounting system
- Ease of installation and service with top access load cell pockets
- Black epoxy paint
- 20 ft Survivor® EL147HE hostile environment load cell cable for connecting to an indicator

Specifications

| Description | Capacity | Load Cell and Mount Capacity | Est. Ship Weight |
|---------------------|-----------------------|------------------------------|------------------|
| 5 ft x 5 ft x 11 in | 40,000 lb (20,000 kg) | Qty (4) 50,000 lb each | 1,900 lb |
| 5 ft x 5 ft x 11 in | 60,000 lb (30,000 kg) | Qty (4) 50,000 lb each | 1,900 lb |
| 5 ft x 5 ft x 11 in | 80,000 lb (40,000 kg) | Qty (4) 75,000 lb each | 1,900 lb |
| 6 ft x 6 ft x 11 in | 40,000 lb (20,000 kg) | Qty (4) 50,000 lb each | 2,575 lb |
| 6 ft x 6 ft x 11 in | 60,000 lb (30,000 kg) | Qty (4) 50,000 lb each | 2,575 lb |
| 6 ft x 6 ft x 11 in | 80,000 lb (40,000 kg) | Qty (4) 75,000 lb each | 2,575 lb |

Warranty

- Five-year limited warranty

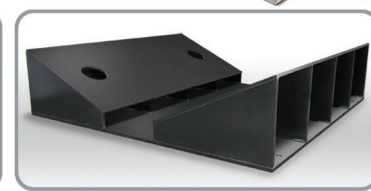
Approvals



NTEP Certified 11-068,
Class III, 5,000d

Options

- Digital weight indicators
- Remote displays
- Printers
- Coil Cradle



Your Rice Lake Weighing Systems distributor is:

RICE LAKE®
WEIGHING SYSTEMS
To be the best by every measure®

230 W. Coleman St. • Rice Lake, WI 54868 • USA
TEL: 715-234-9171 • FAX: 715-234-6967 • www.ricelake.com

An ISO 9001 registered company © 2013 Rice Lake Weighing Systems PN 158419 10/13
Specifications subject to change without notice.