

## Loss of Lifting Capacity

Legacy Scale Class	K Lost Load Center	F Horizontal Center of Gravity	Vertical Center of Gravity	D Weight
Class II 16" x 36"	4 3/4"	2 3/8"	9"	350 lbs.
Class III 20" x 42"	5 1/4"	2 5/8"	11"	570 lbs.
Class III 20" x 48"	5 1/4"	2 5/8"	11"	670 lbs.
Class IV 25" x 48" 12,000 lb. Capacity	5 3/4"	2 7/8"	13 1/2"	950 lbs.
Class IV 25" x 48" 20,000 lb. Capacity	6 1/2"	3 1/4"	13 1/2"	1,150 lbs.

**Important: Material handling distributor must calculate using the figures above. Per OSHA, the ID plate on the forklift must be updated with the new lifting capacity and center of gravity information.**

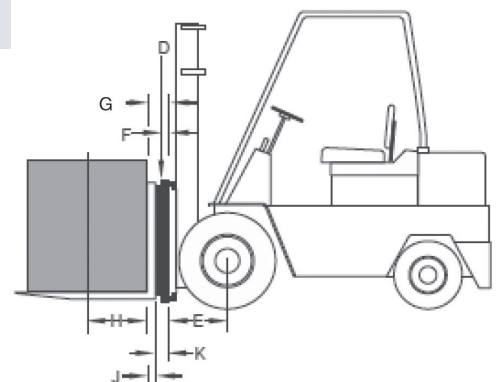
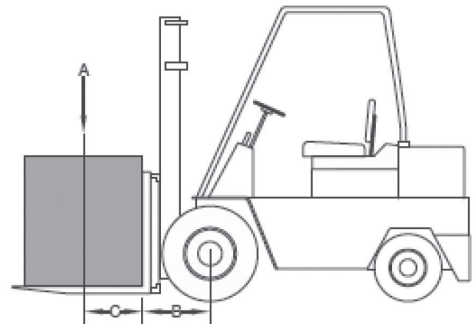
## Calculating Lifting Capacity

In order to calculate the derated lifting capacity of the lift truck after scale installation, you will need to make the following measurements. Note that factors K, D and F are found in the Loss of Lifting Capacity table above.

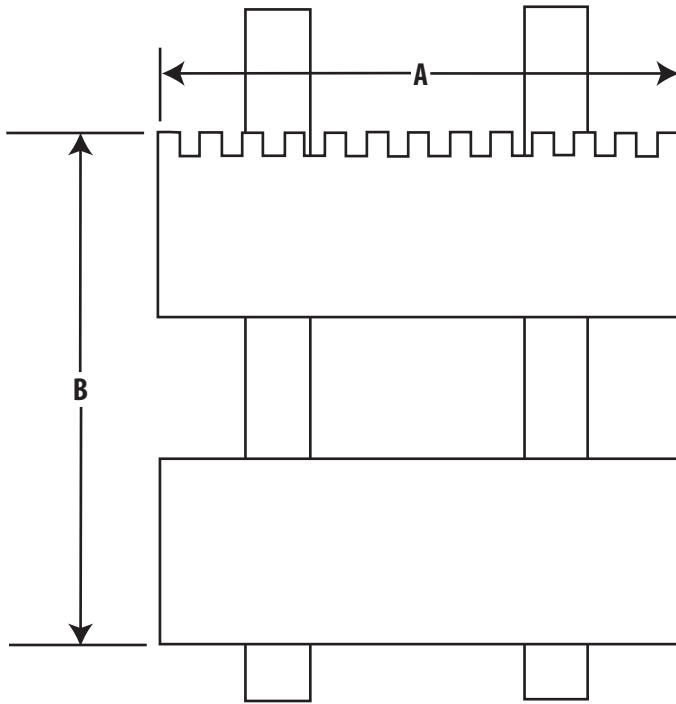
A = Basic Truck Capacity (lbs)	B = Inches from front wheel centerline to face of the fork
C = Inches from the face of the fork	D = Weight of the scale (lbs) to the truck rating point (typ 24")
E = Inches from the front wheel centerline to the face of the carriage	F = Inches from the face of the carriage to the scale horizontal center of gravity
G = J + K (Inches from the face of the carriage to the rear face of the load)	H = Inches from fork face to the new truck rating point
J = Thickness of forks	K = Thickness of the scale

Once the above factors have been determined, plug them into the formula below to determine the truck lifting capacity derated for the attachments installed.

$$\text{CAPACITY} = \frac{A(B+C) - D(E+F)}{E+G+H}$$



# Cleat-Type Fork Mounting Questionnaire



Circle Below

A= 31"

36"

42"

B= 16"

20"

25"

Lift Truck Make:

Lift Truck Model:

Power Type (Circle One):

Electric

Propane

Other

Voltage (If Electric):

12VDC

24VDC

36VDC

48VDC

Other

Maximum Lifting Height:

Fork Capacity:

Side Shifter:

Yes

No

Other Attachments:

NTEP:

Yes

No

Distributor:

Phone:

Circle all peripherals/add-ons that apply:

Radio

RS232

Scanner

Printer

Other

## SUMMARY TERMS AND CONDITIONS

- When applicable, sales tax will be added to the invoice as a separate charge. If an exemption from sales and/or use tax is claimed, supporting documents must be furnished by Buyer prior to shipment in order to avoid the charges.
- Prices, terms and conditions of sale are subject to change at discretion of LTS.
- Any sales quotations provided by LTS shall automatically expire sixty (60) calendar days from the date issued, and are subject to termination by LTS by notice to Buyer.
- Upon credit approval by LTS, payment terms are net thirty (30) days after the date of LTS's invoice. Cash in advance is required before shipment without credit approval.
- Orders from accounts that have been dormant for one (1) year or more or have a poor credit history shall require prepayment by credit card or wire transfer.
- Buyer grants LTS a security interest in all goods sold to Buyer until the payment of the LTS invoice.
- All sales are FOB LTS Scale warehouse, Twinsburg, OH, and all risk of loss shall pass to Buyer at time of shipment regardless of the method of shipment.
- Shipping and handling charges apply to all shipments and will be added as a separate charge on the invoice, including warranty item shipments.
- LTS shall not be liable to Buyer for any lost profits or other economic loss of Buyer arising out of any breach of this agreement by LTS or the failure of the goods to perform in any particular manner.
- Any legal action shall be subject to, construed under and enforced according to the laws of the State of Ohio.
- LTS Scale is not responsible for clerical or typographical errors made in any of its publications, quotations, orders, acknowledgements or invoices. All such errors are subject to correction.
- Software embedded in or bundled with hardware must be used solely with the device for which it was intended and may not be transferred separately.
- Any inconsistent terms set forth by the Buyer shall not be binding upon LTS Scale unless agreed to in writing. No waiver or exception to any of the conditions contained herein or any of the special terms and provisions relating to any order shall be binding upon LTS Scale unless agreed to in writing.
- Export orders may require prepayment by credit card or wire transfer.

## WARRANTY

LTS Metrology, LLC dba LTS Scale Company ("LTS Scale") warrants the equipment that we manufacture for a period of twelve (12) months from the date of shipment against manufacturer's defects in materials and/or workmanship. The warranty applies only to the original owner of the equipment. LTS Scale's obligation under this warranty is limited to the repair or replacement of defective parts, and the associated labor and travel costs for the repair. Replacement or repair of parts or products is at the sole discretion of LTS Scale. This warranty does not cover shipping and handling charges.

For electronic products, manufactured by other companies and, sold by LTS Scale, the warranty is limited to that offered by the electronic product's original manufacturer. Typical examples of such products include, but are not limited to, computers, printers, scanners and specialty indicators.

This warranty specifically excludes any repairs not necessitated by a manufacturer's defect. This includes, but is not limited to, failure to install, calibrate, and/or operate the product in accordance with the manufacturer's installation and/or technical manual. It also does not include intentional misuse of the product.

All warranty work must be pre-authorized by LTS Scale and performed by LTS Scale or a certified scale technician dispatched by LTS Scale at its sole discretion. LTS Scale reserves the right to modify this warranty policy at any time.

**LTS SCALE MAKES NO OTHER WARRANTIES, EXPRESS OR IMPLIED, AND ALL IMPLIED WARRANTIES OF MERCHANTABILITY, AND/OR FITNESS FOR A PARTICULAR PURPOSE ARE HEREBY DISCLAIMED. IN NO EVENT WILL LTS SCALE BE LIABLE FOR PUNITIVE, SPECIAL OR CONSEQUENTIAL DAMAGES, OR FOR AN AMOUNT IN EXCESS OF THE PURCHASE PRICE OF THE DEFECTIVE LTS SCALE PRODUCT OR PRODUCTS.**

## RETURN POLICY

### Standard Products and Parts Return Policy

- No Returns accepted more than ninety (90) days after shipment.
- Orders totaling \$25,000 or more cannot be returned.
- Used, obsolete or damaged items are not returnable.
- Returned items must be in re-saleable condition for credit.
- All returned items are subject to an inspection. LTS reserves the right to charge for any damage sustained.
- Any non-creditable items may be returned to the Customer at their expense.
- Customer will pay for freight associated with returned parts and/or returned items.
- Freight charges are not refundable or eligible for credit.
- Customers must obtain a Return Materials Authorization (RMA) number prior to shipping items back to LTS Scale.
- Items received at LTS Scale without a RMA number may not be granted credit and may be returned to the Customer at their expense.
- In order to obtain an RMA, the following information is required:
  - o Invoice or sales order number from the original purchase.
  - o Item number(s) and quantities to be returned.
  - o Reason for the return.
  - o Contact information for person authorized to resolve return items.

### A) Returns 30 days or less after shipment – Restocking fee may apply

- a. After inspection, items that are in "like new" condition will be issued credit.
- b. After inspection, items that are not in "like new" condition may be assessed a 20% restocking fee (\$10 minimum).

### B) Returns 31 to 90 days after shipment – Restocking fee applies

- a. After inspection, items that are in "like new" condition will be assessed a 20% restocking fee (\$10 minimum) and credit issued for the balance of the items cost.

### Custom Orders Return Policy

- Custom Orders, Special Orders, Class III scales with 42" back plate width, Class IV scales and Bar Mount scales (each a "Custom Order") cannot be returned.

## ORDER CANCELLATION POLICY

### Cancellations within one (1) week of order receipt

LTS Scale will cancel orders for Standard Products or Parts (i.e., items that not a Custom Order) within one (1) week of order receipt and prior to shipment.

### Cancellations after one (1) week of order receipt

LTS Scale will cancel orders for Standards Products or Parts under \$10,000 with no service charge or restocking fee after one (1) week of order receipt and prior to shipment. Orders for Standard Products or Parts over \$10,000 will incur a 20% restocking fee.

Orders canceled after shipment will be treated as a return (see Return Policy) regardless of when the order was placed.

Undelivered portions of any Standard Product or Parts order may be canceled by the Buyer only with the written approval of LTS. If the Buyer makes an assignment for the benefit of creditors, or in the event that LTS for any reason feels insecure about the Buyer's willingness or ability to perform, LTS shall have the unconditional right to cancel the sales transaction or demand full or partial payment in advance.

The LTS Scale Order Cancellation Policy does not apply to Custom Orders, non-standard size orders or other special orders. If a Custom, non-standard size, or other special order is cancelled by the Buyer for any reason; or by LTS Scale, for the reasons listed above; the Buyer shall pay to LTS Scale the actual costs and expenses incurred prior to the notice of cancellation, plus 50% of such total costs and expenses. The minimum cancellation charge shall be 15% of the contract price.