



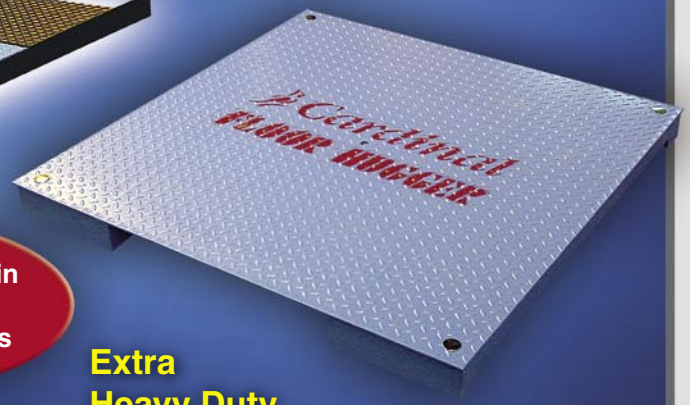
# Heavy Duty and Extra Heavy Duty **FLOOR HUGGER** Electronic Low-Profile Platform Scales

- Low Profile
- Electronic
- Four Way Approach
- Capacities up to 20,000 lb (9,071 kg)
- Well-Protected **Stainless Steel Load Cells**
- Standard Platform Sizes from 3' x 3' to 12' x 10' (.9 m x .9 m to 3.7 m x 3.0 m)
- Custom Sizes Available



## Heavy Duty

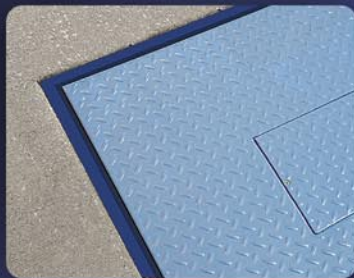
These models are ideal for all types of manufacturing, food and chemical processing, and shipping-receiving operations. All Cardinal Floor Huggers are available in stainless steel or painted steel, depending on your application. Optional ramps provide easy access to the scale for pallet jacks and forklifts.



All Models Available in Stainless Steel for Frequent Washdowns

## Pit Type Applications

The Cardinal "Full Frame" Floor Scale is the perfect choice for pit type applications where you need the scale flush with your floor surface. The lower frame design allows you to lower the scale into a preformed pit with minimal construction required. The top side access to the load cell junction box can help you make the perfect installation.



## Extra Heavy Duty

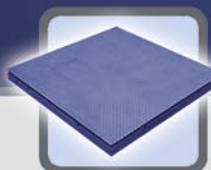
These models offer all the flexibility and performance of our heavy duty models, but in an extra heavy duty version. Available in capacities up to 20,000 lb (9,071 kg) and standard platform sizes up to 12' x 10' (3.7 m x 3.0 m), these robust scales are designed to provide long-term service and accuracy even in the most severe installations. Easy access ramps are available in either steel or stainless steel.



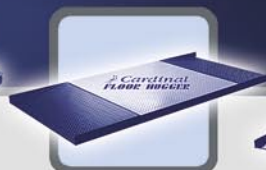
Integral Ramps



Lift-Up Tops



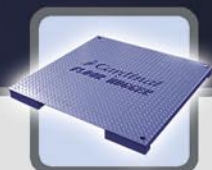
Stainless Steel



Lower Frame

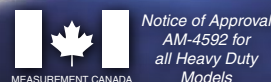
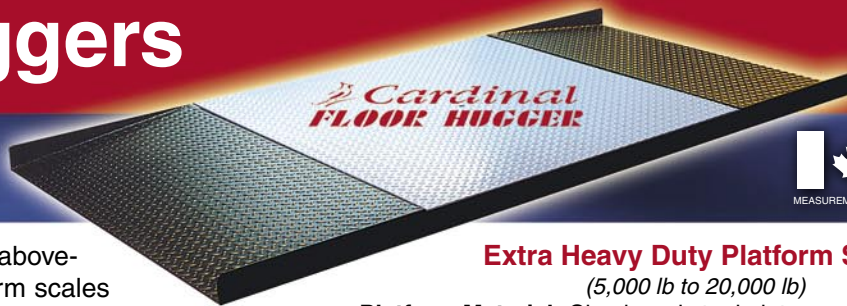


Frameless



Extra Heavy-Duty

# Floor Huggers



**Cardinal's Floor Hugger** above-ground or pit installation platform scales provide the latest in weighing technology. Cardinal's unique load cell assemblies are self-checking, incredibly well-protected, and environmentally sealed for those less-than-perfect locations.

Other design features include a rigidly constructed weigh-bridge with easy-to-remove ramps. When necessary, the entire scale can be conveniently lifted, moved, and re-installed as your production and traffic flow needs change. Choose from Floor Huggers with integral ramps, lift-up tops or stainless steel for harsh environments.

## Heavy Duty Platform Specifications

(1,000 lb to 5,000 lb)

**Platform Material:** Smooth plate (1,000 and 2,000 lb models). Checkered steel plate (5,000 lb models)

**Weighing Elements:** 4 hermetically-sealed, stainless steel load cells.

**Calibration Controls:** Trim resistors for section sealing in addition to calibration adjustments in weight displays.

**Platform Restraint:** Self-checking load cells.

**Leveling Device:** Adjustable leveling feet mounted to each load cell.

**Remote Load Cell Cable:** 15' - Additional cable available.

## Heavy-Duty Frameless Floor Huggers

Model	Platform Size	Approx. Ship Weight
Capacity: 1,000 lb - Display: 1,000 lb x .2 lb (454 kg x .09 kg)		
FH-133-II	3' x 3' (.9 m x .9 m)	165 lb (75 kg)
FH-144-II	4' x 4' (1.2 m x 1.2 m)	240 lb (109 kg)
FH-155-II	5' x 5' (1.5 m x 1.5 m)	330 lb (150 kg)
Capacity: 2,000 lb - Display: 2,000 lb x .5 lb (907 kg x .2 kg)		
FH-233-II	3' x 3' (.9 m x .9 m)	165 lb (75 kg)
FH-244-II	4' x 4' (1.2 m x 1.2 m)	240 lb (109 kg)
FH-255-II	5' x 5' (1.5 m x 1.5 m)	330 lb (150 kg)
Capacity: 5,000 lb - Display: 5,000 lb x 1 lb (2,268 kg x .5 kg)		
FH-533-IIIE	3' x 3' (.9 m x .9 m)	267 lb (121 kg)
FH-544-IIIE	4' x 4' (1.2 m x 1.2 m)	402 lb (182 kg)
FH-555-IIIE	5' x 5' (1.5 m x 1.5 m)	567 lb (257 kg)

Cardinal Scale reserves the right to improve, enhance, or modify features and specifications without prior notice.



Cardinal Scale Manufacturing Co.  
203 E. Daugherty, Webb City, MO 64870 USA  
Ph: 417-673-4631 or 800-441-4237 • Fax: 417-673-5001  
www.cardinalscale.com

## Extra Heavy Duty Platform Specifications

(5,000 lb to 20,000 lb)

**Platform Material:** Checkered steel plate

**Weighing Elements:** 4 hermetically-sealed, stainless steel load cells.

**Calibration Controls:** Trim resistors for section sealing in addition to calibration adjustments in weight displays.

**Platform Restraint:** Self-checking load cells.

**Remote Load Cell Cable:** 15' - Additional cable available.

**Adjustable Overall Height for Frameless Models:** 3 1/4"

**Overall Height for 20,000 lb:** 5 1/8"



## Extra Heavy-Duty Frameless Floor Huggers

Model	Platform Size	Approx. Ship Weight
Capacity: 5,000 lb - Display: 5,000 lb x 1 lb (2,268 kg x .5 kg) NTEP Certificate of Conformance No. for 5,000 & 10,000 lb 96-113		
FHN-533	3' x 3' (.9 m x .9 m)	467 lb (211 kg)
FHN-544	4' x 4' (1.2 m x 1.2 m)	521 lb (237 kg)
FHN-555	5' x 5' (1.5 m x 1.5 m)	701 lb (318 kg)
FHN-564	6' x 4' (1.8 m x 1.2 m)	745 lb (338 kg)
FHN-575	7' x 5' (2.1 m x 1.5 m)	940 lb (426 kg)
Capacity: 10,000 lb - Display: 10,000 lb x 2 lb (4,536 kg x .9 kg)		
FHN-1044	4' x 4' (1.2 m x 1.2 m)	521 lb (237 kg)
FHN-1054	5' x 4' (1.5 m x 1.2 m)	610 lb (277 kg)
FHN-1055	5' x 5' (1.5 m x 1.5 m)	701 lb (318 kg)
FHN-1064	6' x 4' (1.8 m x 1.2 m)	745 lb (338 kg)
FHN-1075	7' x 5' (2.1 m x 1.5 m)	940 lb (426 kg)

\*All the above models are also available in a Lower Frame design and have the NTEP Certificate of Conformance No. 90-069A2.

## Extra Heavy-Duty Lower Frame Floor Huggers

Model	Platform Size	Approx. Ship Weight
Capacity: 20,000 lb - Display: 20,000 lb x 5 lb (9,071 kg x 2.3 kg) NTEP Certificate of Conformance No. 90-069A2		
FH-2055-II	5' x 5' (1.5 m x 1.5 m)	975 lb (442 kg)
FH-2064-II	6' x 4' (1.8 m x .9 m)	950 lb (431 kg)
FH-2075-II	7' x 5' (2.1 m x 1.5 m)	1,290 lb (585 kg)
FH-2086-II	8' x 6' (2.4 m x 1.8 m)	1,675 lb (760 kg)
FH-2097-II	9' x 7' (2.7 m x 2.1 m)	2,010 lb (912 kg)
FH-201210-II	12' x 10' (3.7 m x 3.0 m)	4,400 lb (2,000 kg)

Sold By:

**Filing Scale Company**

1500 Enterprise Parkway Twinsburg Ohio, 44087

Phone: 330-425-3092 or 800-760-4322 Fax: 330-425-8905

www.filingscale.com